



NOW THE WORLD'S BEST AIR FILTER IS ALSO THE BEST FLAME ARRESTOR!

More Horsepower from Channeled Air Flow

The heart of the K&N Flame Arrestor is its unique filter element. It is designed to straighten and channel incoming air through its screen mesh and oiled cotton gauze sandwich construction. The result is a dramatic reduction of "air friction" and a corresponding increase in intake volume...meaning a bigger "gulp" of usable air for each intake stroke. Engines equipped with a K&N High Performance Flame Arrestor actually produce MORE horsepower than those with no filtration at all.

Marine Approved per SAE J1928 Flame Arrestor Standard

Coast Guard Regulations stipulate that all gasoline-powered watercraft be equipped with flame arrestors. Until now, that meant choosing between a Coast Guard citation or restricted airflow. The K&N Flame Arrestor eliminates the need to choose. K&N's Flame Arrestor is the performance and safety product that boat owners have been waiting for.

Purifies Even Marine Air

No dirt, no dust right? No way! One of boating's most common misconceptions is that marine air is clean air, so air filters are unnecessary. The truth is that marine engines need filtration protection every bit as much as their landlubber cousins. Once airborne, impurities affect air quality both near and off-shore – especially in fresh water environments. And most boats carry their own generous supply of stow-away dust and dirt tracked aboard on clothing, gear and muddy shoes. It's completely unaffected by moisture, because of the unique oiled cotton gauze and epoxy-coated wire screen construction. So it's the perfect choice for every marine engine application – from ski boats to fishing boats to racers to day cruisers.

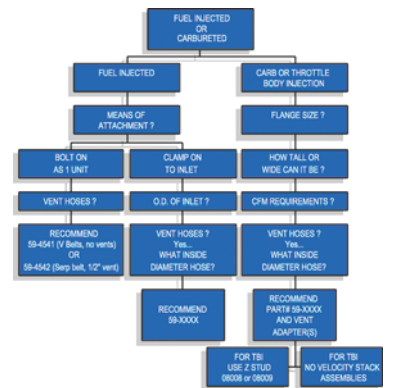
Stainless Steel Housing

Who knows the virtues of stainless steel better than the boat owner? The housing of the K&N Flame Arrestor is polished stainless steel, ensuring solid, rust free service for long engine life. Through test after test, the K&N Flame Arrestor has withstood a wide range of marine punishments: backfire, vibration, moisture, salt spray, rust and corrosion.

Washable and Reusable

The oiled cotton gauze and epoxied screen element in K&N's Flame Arrestor is a one-time investment. A quick service every 500 engine hours or so is all it takes to restore the filter to its original efficiency. K&N is the world leader in advanced air filtration technology for high performance engines. The introduction of the K&N Flame Arrestor represents a significant innovation for marine engine applications. Never before has there been a product that can single-handedly improve horsepower by as much as 15 percent, satisfy Coast Guard regulations and offer critical engine protection.

HINTS FOR SELECTING THE PROPER K&N FLAME ARRESTOR



Power, Performance, Protection
K&N Flame Arrestors



PERFORMANCE FILTERS

K&N MARINE FLAME ARRESTORS & ACCESSORIES BOAT APPLICATIONS

Due to the differences in engine compartment designs, and accessories supplied by those manufactures, clearances may vary from boat to boat. The applications listed in this brochure are to be used as a reference guide only. Make sure to double check all the measurements before ordering by using the checklist below. If you wish to increase or decrease the size of the filter, see Universal 3-Piece assemblies below. (#59-1195 shown in picture)



INDMAR

Engine & Fuel System	Size	Total Ht	Element Ht	Part #	Engine & Fuel System	Size	Total Ht	Element Ht	Part #
5.7L LS-1 Corvette MPI	5.7L V8	N/A	N/A	N/A	5.7L Vortec TBI	5.7L V8	3.75"	2"	07-593264 ^{1,3}
5.7L Hammerhead 2 bbl	5.7L V8	N/A	N/A	N/A	7.4L 4 bbl	7.4L V8	3.75"	2"	07-593264
5.7L Monsoon EFI	5.7L V8	N/A	N/A	N/A	7.4L MPI	7.4L V8	N/A	N/A	07-595020 ^{1,2}
5.7L Mallbu Vortec 4 bbl	5.7L V8	3.75"	2"	07-593264 ¹	8.1L 4 bbl	8.1L V8	4.50"	2.75"	07-593364
5.7L Vortec Carb 4 bbl	5.7L V8	3.75"	2"	07-593264	8.1L PFI	8.1L V8	N/A	N/A	07-595020
5.7L Vortec PFI	5.7L V8	N/A	N/A	N/A					

MERCURY

Engine & Fuel System	Size	Total Ht	Element Ht	Part #	Engine & Fuel System	Size	Total Ht	Element Ht	Part #
3.0L 2 bbl*	3.0L L4	3.75"	2"	07-593264 ¹	98-00 Mercrusier	7.4L V8	6.625"	6"	07-595004
4.3L 2 bbl*	4.3L V6	3.75"	2"	07-593264 ¹	Early Mercrusier MPI				
4.3LH 4 bbl	4.3L V6	3.75"	2"	07-593264 ^{1,3}	3V Pulley	454 MAG	4.375"	4"	07-594541 ⁵
4.3L EFI TBI	4.3L V6	3.75"	2"	07-593264 ^{1,2}	Early Mercrusier MPI				
5.0L 2 bbl*	5.0L V8	4.50"	2.75"	07-593364 ^{1,2,4}	3V Pulley	502 MAG	4.375"	4"	07-594541 ^{5,6}
5.0L EFI TBI	5.0L V8	4.50"	2.75"	07-593364 ^{1,2}	Late MPI Serpentine Belt	454 MAG	4.375"	4"	07-594542 ^{5,6}
5.7L 2 bbl*	5.7L V8	4.50"	2.75"	07-593364 ^{1,2}	Late MPI Serpentine Belt	502 MAG	4.375"	4"	07-594542
5.7L SKI 2 bbl*	5.7L V8	4.50"	2.75"	07-593364 ^{1,2,4}	496 MPI	8.1L V8	4.375"	4"	07-595005
5.7L EFI TBI	5.7L V8	4.50"	2.75"	07-593364 ^{1,2,4}	496 HO & Mag MPI	8.1L V8	4.375"	4"	07-595005 ^{1,2}
Early 4.3, 5.0, 5.7 MPI	All				HP 500 4 bbl	8.2L V8	6.75"	5"	07-593370
Late 4.3, 5.0, 5.7 MPI	All				HP 500 MPI	8.2L V8	4.375"	4"	07-595020
					Early 6.2 MX MPI	6.2L V8			
					Late 6.2 MX MPI	6.2L V8			

VOLVO PENTA

Engine & Fuel System	Size	Total Ht	Element Ht	Part #	Engine & Fuel System	Size	Total Ht	Element Ht	Part #
SX SERIES					5.7 GS 2 bbl	5.7L V8	4.50"	2.75"	07-593364 ^{1,2}
3.0 GS 2 bbl*	3.0L L4	3.75"	2"	07-593264 ¹	5.7L Gsi EFI-TBI	5.7L V8	4.50"	2.75"	07-593364 ^{1,2,4}
4.3GL 2 bbl*	4.3L V6	3.75"	2"	07-593264 ¹	7.4 Gi EFI-MPI	7.4L V8	4.50"	2.75"	07-593364 ^{1,2,4}
4.3L Gi EFI-TBI	4.3L V6	3.75"	2"	07-593264 ^{1,3}	7.4 Gsi EFI-MPI	7.4L V8	4.50"	2.75"	07-593364 ^{1,2,4}
5.0GL 2 bbl*	5.0L V8	4.50"	2.75"	07-593364 ^{1,2}	8.1L MPI EFI-MPI	8.1L V8	4.50"	2.75"	07-593364 ^{1,2,4}
5.0L Gi EFI-TBI	5.0L V8	4.50"	2.75"	07-593364 ^{1,2,4}	HIGH-END SERIES				
5.7 GS 2 bbl*	5.7L V8	4.50"	2.75"	07-593364 ^{1,2}	DPX 385 EFI-MPI	7.4L/454	4.50"	2.75"	07-593364 ^{1,2,4}
5.7L Gsi EFI-TBI	5.7L V8	4.50"	2.75"	07-593364 ^{1,2,4}	DPX 415 EFI-MPI	8.2L/502	4.50"	2.75"	07-593364 ^{1,2,4}
7.4 Gi MPI	7.4L V8	4.50"	2.75"	07-593364 ^{1,2,4}	DPX 500 EFI-MPI	8.2L/502	4.50"	2.75"	07-593364 ^{1,2,4}
DUOPROP SERIES					DPX 600 EFI-MPI	8.8L/540	4.50"	2.75"	07-593364 ^{1,2,4}
4.3GL 2 bbl*	4.3L V6	3.75"	2"	07-593264 ¹	INBOARD SERIES				
4.3L Gi EFI-TBI	4.3L V6	3.75"	2"	07-593264 ^{1,4}	7.4Gi EFI-MPI	7.4L/454	4.50"	2.75"	07-593364 ^{1,2,4}
5.0GL 2 bbl*	5.0L V8	4.50"	2.75"	07-593364 ^{1,2}	PLATINUM SERIES				
5.0L Gi EFI-TBI	5.0L V8	4.50"	2.75"	07-593364 ^{1,2,4}	7.4Gi EFI-MPI	7.4L/454	4.50"	2.75"	07-593364 ^{1,2,4}

IMPORTANT: DID YOU CHECK THE FOLLOWING?

1. Diameter clearance around the existing flame arrestor. Can the flame arrestor diameter be increased?
2. Height restriction, due to hatch clearance or any other obstruction. Can the flame arrestor's height be increased?
3. Do any vent lines connected to existing flame arrestor. If there are vent lines attached, measure inside diameter of vent line and order appropriate vent hose kit below.
4. For multiple carburetor application, check center to center measurements ensuring enough space for two flame arrestors.
5. Check diameter of carburetor.

Footnotes for above applications:

- | | | |
|--------------------------------|--|--------------------------------------|
| 1) May increase size as needed | 4) Use Z-stud Part #08009 | 7) Single Stud, 3-7/8" throttle body |
| 2) May decrease size as needed | 5) Kit includes adapter Part # 85-8837 and flame arrestor Part # 59-5005 | 8) 3 Studs, 3-5/8" throttle body |
| 3) Use Z-stud Part #08008 | 6) Kit includes adapter Part # 85-8837 and flame arrestor Part # 59-5006 | |

* Fits Holley 2 bbl. For Rochester 2 bbl. (3/16" Neck Flange) use Part #59-3262 or #59-3362.

UNIVERSAL 3-PIECE FILTER ASSEMBLY

Outside Diameter	Flange Diameter	Element Height	Total Height	Velocity Stack	Part #	Outside Diameter	Flange Diameter	Element Height	Total Height	Velocity Stack	Part #
14"	5-1/8"	2.25"	3.87"	No	07-593214	9"	4-7/32"	2.75"	4.5"	No	07-593368
14"	5-1/8"	3.0"	4.62"	No	07-593314	9"	3-1/16"	2.0"	3.75"	No	07-593262
14"	5-1/8"	4.0"	5.62"	No	07-593414	9"	3-1/16"	2.75"	4.5"	No	07-593362
9"	5-1/8"	2.75"	4.5"	No	07-593364	9"	2-5/8"	2.75"	4.5"	No	07-593360
9"	5-1/8"	2.0"	3.75"	No	07-593264	9"	7-5/16"	5.0"	10.75"	Yes	07-591198
9"	5-1/8"	5.0"	6.75"	No	07-593370	9"	7-5/16"	2.75"	4.5"	No	07-590284
9"	5-1/8"	2.75"	8.5"	Yes	07-591195	9"	7-5/16"	2.75"	8.5"	Yes	07-593366
9"	5-1/8"	5.0"	10.75"	Yes	07-591196	9"	7-5/16"	5.0"	6.75"	No	07-591197



Vent Hose Adapter on 3 Piece Assembly



#59-3364 on Carbed Application



#59-5020 on Mercruiser HP 500



#59-5005 on Mercruiser 496 H0

MARINE VENT HOSE KITS *(Trimming for correct height may be required)*

Size	Height	Part #	Size	Height	Part #	Size	Height	Part #
1/4"	2.75"	07-851325	3/8"	6"	07-851637	5/8"	4"	07-851462
1/4"	4"	07-851425	1/2"	2.75"	07-851350	5/8"	6"	07-851662
1/4"	6"	07-851625	1/2"	4"	07-851450	3/4"	2.75"	07-851375
3/8"	2.75"	07-851337	1/2"	6"	07-851650	3/4"	4"	07-851475
3/8"	4"	07-851437	5/8"	2.75"	07-851362	3/4"	6"	07-851675

CLAMP-ONS

Type	Flange	Length	Width	Height	Notes	Part #	Type	Flange	Length	Width	Height	Notes	Part #
Kit	4"	6.16"	5"	5"	GM 7.4L	07-594540	Rnd	3.75"	9.5"x4.625"B	8.5"x3.75"T	4"	454/502 MAG	07-595005
Oval	2.93"x4.75"	6.5"	4.75"	5.62"	GM TPI	07-595000	Rnd	3.75"	9.5"x4.625"B	8.5"x3.75"T	4"	454/502 MAG 1/2"Vnt	07-595006
Oval	2.93"x4.75"	8.62"	4.5"	3.18"	GM LT-1 No Vent	07-595020	Rnd	3.5"	5"	4.5"x3.25"	5"		07-595003
Oval	2.93"x4.75"	8.62"	4.5"	3.18"	GM LT 5/8" Vents(2)	07-595021	Rnd	3.625"	5.75"	3"	6"		07-595004
Oval	2.93"x4.75"	8.62"	4.5"	3.18"	GM LT-1 5/8" Vent	07-595019	Rnd	3.625"	5.75"	3"	6"	96-97 GM 2) 3/4"Vnts	07-595001
Oval	2.93"x4.75"	8.62"	5.25"	5.5"	GM 454 TPI	07-595050	Rnd	3.75"	9.31"	4.5"	3"	96-97 GM (2) 5/8"Vnts	07-595022
Oval	3.44"x5.44"	8.5"	5.06"	5"		07-595007	Rnd	3.75"	9.31"	4.5"	3"	96-97 GM (2) 3/4"Vnts	07-595023
							Rnd	3.75"	9.31"	4.5"	3"	96-97 GM	07-595030
							Rnd	3.75"	9.31"	4.5"	3"	96-97 GM 5/8"Vnt	07-595010
							Rnd	3.75"	5.25"	3"	6"		07-592030
							Rnd	4"	5.38"	4.5"x3.25"	5"		07-595002